

Display Mounting Guide

This document contains installation instructions for two mounts - the metallic bracket and the monitor mount. Please refer to the section corresponding to your mount.

Metallic Bracket Mount

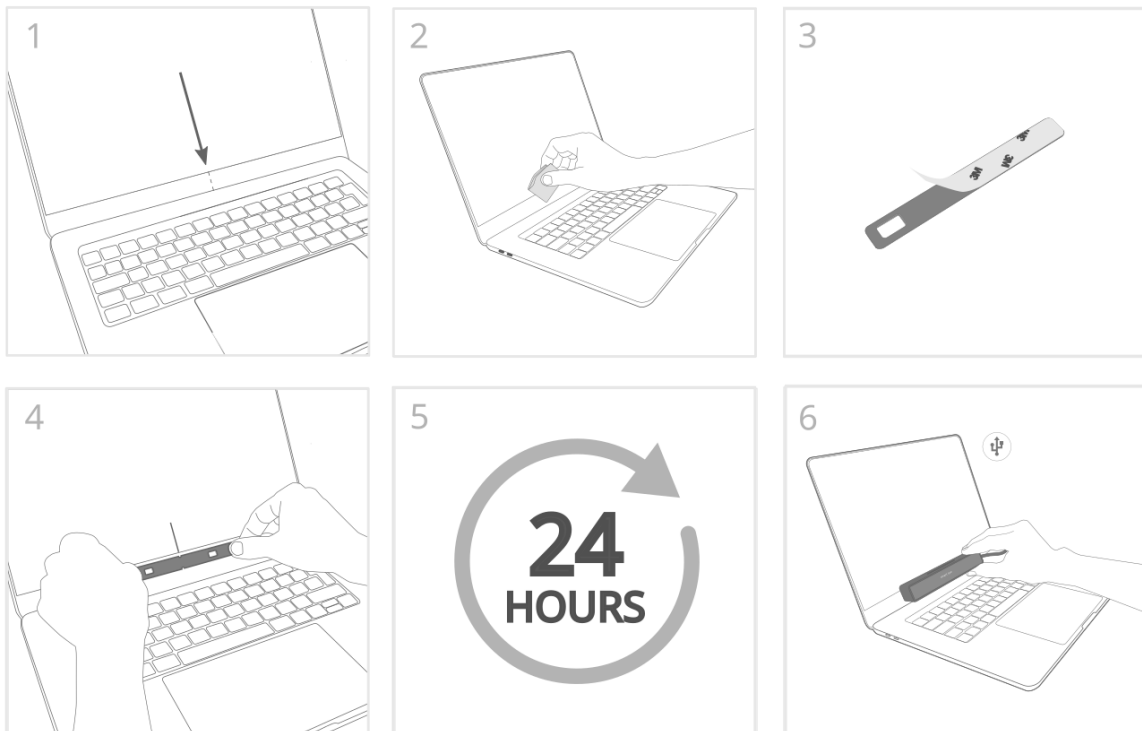
The metallic bracket mount is designed to be attached to the center of the display frame, just under the display area. To make sure a suitable display is used with the bracket, please consider the following:

- The bracket does not fit on displays with a curved surface.
- The frame area on the display where the bracket is to be attached must be flat, not rounded.
- The frame area on the display should be at least 1.5 cm in height to make sure there is enough material to fasten the bracket.
- If possible, avoid displays with a label/text on the frame area where the bracket is to be attached.
- If the bracket is used on a laptop, it might be in the way of closing the lid.
- For laptop mounting, the distance from the lower middle of the image display to the top part of the keyboard frame needs to be at least 2 cm to allow for a bracket and eye tracker to fit.

Installation of the Metallic Bracket

To mount the eye tracker, follow the steps below:

1. Find the center of the lower display edge by marking manually or by using the center marker in the Smart Eye Setup Tool.
2. Clean the mounting area around the center thoroughly with the Chem Pad™ wipe.
3. Remove the adhesive tape cover from the bracket.
4. Align the center of the bracket with the center of the lower display edge. Make sure the bracket is straight. Press and hold for 30 seconds.
5. Wait for 24 hours to allow the tape to harden.
6. Attach the eye tracker to the bracket and connect the eye tracker to the computer using the supplied cable. If the cable is of type USB-A, make sure to connect it to a USB 3.0 port on the computer.



Monitor Mount

The monitor mount is designed to be attached to the sides of the display frame via the arms of the mount, while the attachment point for the eye tracker is located at the bottom center of the display frame. Please note that the mount does not fit on displays with a curved surface and that the sides of the display frame where the mount is to be attached must be flat, not rounded.

Installation of the Monitor Mount

To install the monitor mount, follow the steps below:

1. Clean the lower outer sides of the display thoroughly with the Chem Pad™ wipe.
2. Peel off the adhesive covers on the side arms and extend the side arms and position the base of the mount to the underside of the display and the arms along the display sides.
3. Ensure the mount is aligned with the display when viewed from both the front and the side.
4. Center the mount below the display by measuring or by using the center marker in the Smart Eye Setup Tool.
5. Wait for 24 hours to allow the adhesive to cure.

